

glo.stk.4™ spec sheet 90CRI

LED

body illumination

flexible planar LED lighting sheet in 3000K, 3500K, or 4000K (90CRI), utilizing emitters rated at >77,000hrs L70 per TM21-11 from LM80 data. silver braid power cord standard.

downlight (optional)

COB in 3000K, 3500K, or 4000K (90 CRI) rated >36,000 hours L70 (6.8K) per LM-80 test data, 71,000 hours projected life per IEM TM-21. four beam spreads to choose.

downlight optics

LEDiL® Angelina 82mm dia 31mm high (RoHS compliant) available in 20° spot, 30° medium, 50° wide with specular anodized finish. 90° extra wide features matte white highly reflective finish. color mixing sublens standard. standard mounting clamp allows for easy replacement of reflector in field. the typical total beam angle is the full angle measured where the luminous intensity is half of the peak volume.

end caps

ribbed extruded aluminum end caps available in silver anodized and black anodized finishes. or choose from 12 standard painted finishes listed below.

driver

programmable, class 2, class P universal input (120-277v), constant current, 0-10v dimming, 1% minimum dimming level, PF >.9, THD <20%, protections include open and short circuit, overload and over temperature. remote driver enclosure standard. consult factory for distances over 33 feet.

diffuser

4" dia. .118" Satinice white acrylic cylinder, featuring light diffusion beads evenly distributed throughout the material for optimum light diffusion.

mounting

5" matte white canopy. single stainless steel cable and field adjustable gripper that allows for exact AFF mounting heights. silver braid power cord standard.

CDVR (optional)

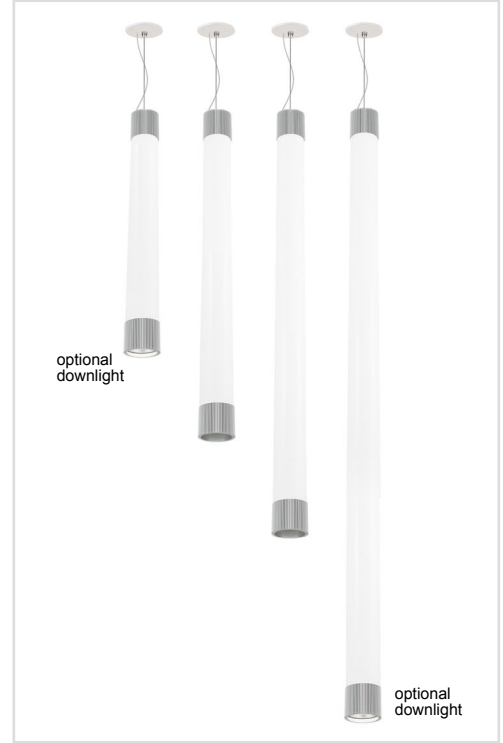
7"dia. spun .064" aluminum canopy in matte white. surface mounted driver.

finish

select from 2 anodized and 12 standard powder coat paint finishes listed below or specify RAL# for custom colors.

emergency

recommend use of inverter (by other). optional WREM: wired for remote EM battery (by other).

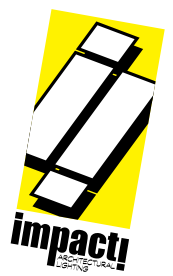


catalog number

--	--	--	--	--	--	--

size	body illumination		downlight		anodized finishes	options						
	CCT	lumens	CCT	beam								
P9624.LV (2ft) 4" dia X 31"ht	30	3000K	LO	1400 lm	30	3000K	S	20° spot	AN silver anodized ANB anodized black painted finish BS brass BU blue BZ bronze CP champagne GM gun metal MB military blue MW matte white OR orange RD red SS satin silver TG textured gray YO yellow	6FT 72" cable 12FT 144" cable CDVR surface-mounted driver canopy WREM wired for remote EM battery pack (by other) (see note above) ELD EldoLED* LUT Lutron* <small>*consult factory</small>		
	35	3500K	HI	2150 lm	35	3500K	M	30° med				
	40	4000K	CL*	xxxx lm (940lm-3200lm) <small>custom lumens consult factory</small>	40	4000K	W	50° wide				
P9636.LV (3ft) 4" dia X 43"ht	30	3000K	LO	1880 lm	30	3000K	S	20° spot	AN silver anodized ANB anodized black painted finish BS brass BU blue BZ bronze CP champagne GM gun metal MB military blue MW matte white OR orange RD red SS satin silver TG textured gray YO yellow	6FT 72" cable 12FT 144" cable CDVR surface-mounted driver canopy WREM wired for remote EM battery pack (by other) (see note above) ELD EldoLED* LUT Lutron* <small>*consult factory</small>		
	35	3500K	HI	3750 lm	35	3500K	M	30° med				
	40	4000K	CL*	xxxx lm (1400lm-4570lm) <small>custom lumens consult factory</small>	40	4000K	W	50° wide				
					NDL		XW	90° extra wide				

premium finish
 RAL specify RAL#



job name:
 type:

glo.stk.4™ spec sheet 90CRI

LED

body illumination

flexible planar LED lighting sheet in 3000K, 3500K, or 4000K (90CRI), utilizing emitters rated at >77,000hrs L70 per TM21-11 from LM80 data. silver braid power cord standard.

downlight (optional)

COB in 3000K, 3500K, or 4000K (90 CRI) rated >36,000 hours L70 (6.8K) per LM-80 test data, 71,000 hours projected life per IEM TM-21. four beam spreads to choose.

downlight optics

LEDiL® Angelina 82mm dia 31mm high (RoHS compliant) available in 20° spot, 30° medium, 50° wide with specular anodized finish. 90° extra wide features matte white highly reflective finish. color mixing sublens standard. standard mounting clamp allows for easy replacement of reflector in field. the typical total beam angle is the full angle measured where the luminous intensity is half of the peak volume.

end caps

ribbed extruded aluminum end caps available in silver anodized and black anodized finishes. or choose from 12 standard painted finishes listed below.

driver

programmable, class 2, class P universal input (120-277v), constant current, 0-10v dimming, 1% minimum dimming level, PF >.9, THD <20%, protections include open and short circuit, overload and over temperature. remote driver enclosure standard. consult factory for distances over 33 feet.

diffuser

4" dia. .118" Satinice white acrylic cylinder, featuring light diffusion beads evenly distributed throughout the material for optimum light diffusion.

mounting

5" matte white canopy. single stainless steel cable and field adjustable gripper that allows for exact AFF mounting heights. silver braid power cord standard.

CDVR (optional)

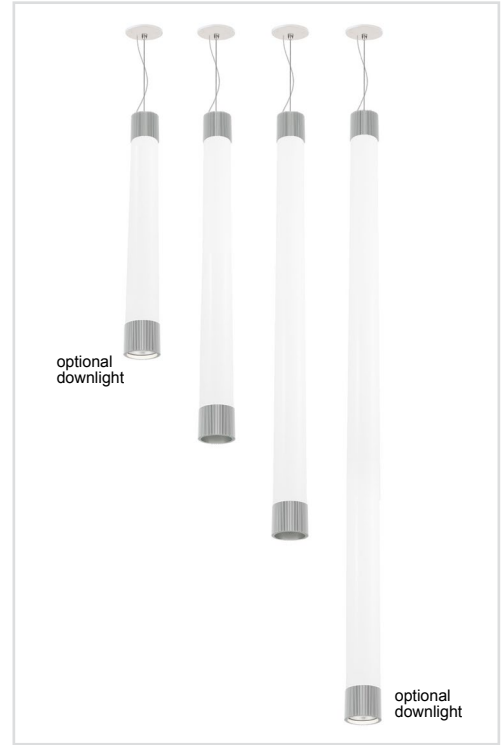
7"dia. spun .064" aluminum canopy in matte white. surface mounted driver.

finish

select from 2 anodized and 12 standard powder coat paint finishes listed below or specify RAL# for custom colors.

emergency

recommend use of inverter (by other). optional WREM: wired for remote EM battery (by other).

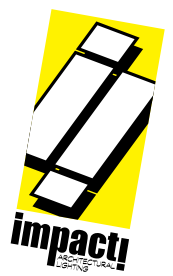


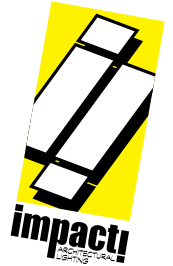
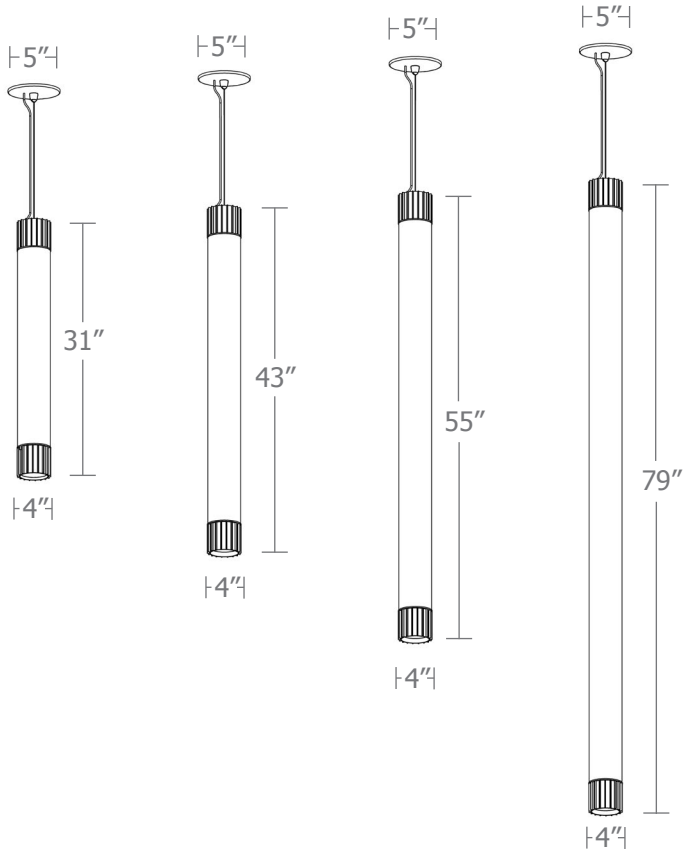
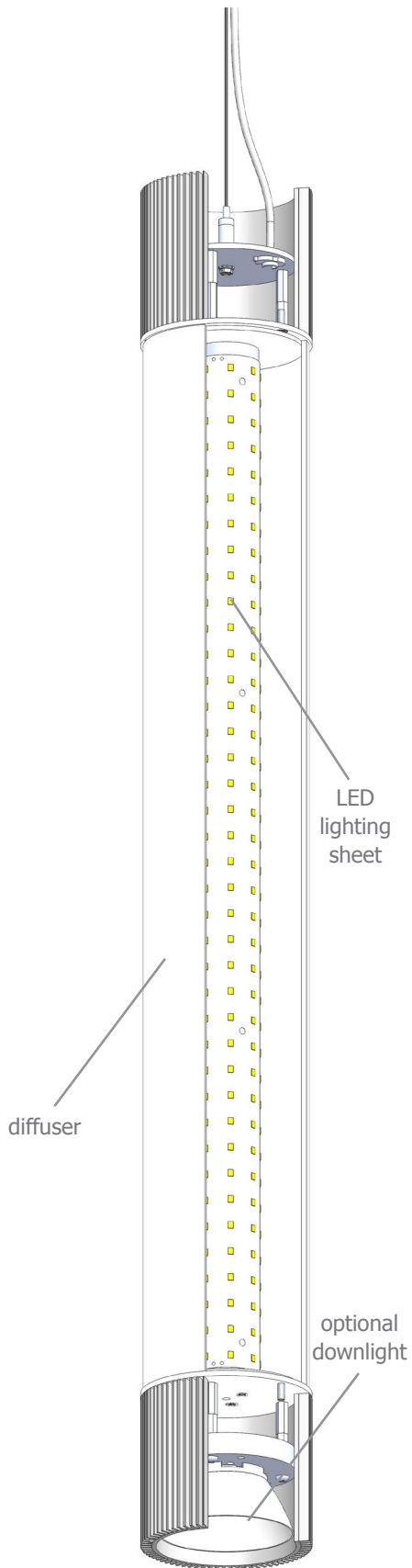
catalog number

--	--	--	--	--	--	--

size	body illumination		downlight		anodized finishes	options					
	CCT	lumens	CCT	beam		6FT	72" cable				
P9648.LV (4ft) 4"dia X 55"ht	30	3000K	LO	2400 lm	30	3000K	S	20° spot	AN silver anodized ANB anodized black	6FT	72" cable
	35	3500K	HI	4300 lm	35	3500K	M	30° med		12FT	144" cable
	40	4000K	CL*	xxxx lm (1900lm-6450lm) <small>custom lumens consult factory</small>	40	4000K	W	50° wide		CDVR	surface-mounted driver canopy
				NDL			XW	90° extra wide			
P9672.LV (6ft) 4"dia X 79"ht	30	3000K	LO	3600 lm	30	3000K	S	20° spot	BS brass BU blue BZ bronze CP champagne GM gun metal MB military blue MW matte white OR orange RD red SS satin silver TG textured gray YO yellow	WREM	wired for remote EM battery pack <small>(by other) (see note above)</small>
	35	3500K	HI	6450 lm	35	3500K	M	30° med		ELD	EldoLED*
	40	4000K	HX	7500 lm	40	4000K	W	50° wide		LUT	Lutron* <small>*consult factory</small>
				NDL			XW	90° extra wide			
				CL*				xxxx lm (3000lm-9100lm) <small>custom lumens consult factory</small>			

premium finish
RAL specify RAL#



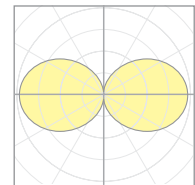


Calculation Table

The application of a Light Loss Factor is required to:

- match the lumen output for the power module specified
- incorporate the increased lumen output due to LED/Driver upgrades

Cat No		Delivered* Lumens	Watts 120V / 277V	IES File #	LLF to be applied
P9624.LV	LO	1400	15	12206	.67
P9624.LV	HI	2150	23	12206	1.03
P9636.LV	LO	1880	20	12206	.90
P9636.LV	HI	3750	40	12206	1.80
P9648.LV	LO	2400	25	12208	.56
P9648.LV	HI	4300	45	12208	1.00
P9672.LV	LO	3600	38	12208	.84
P9672.LV	HI	6450	68	12208	1.51
P9672.LV	HX	7500	79	12208	1.75

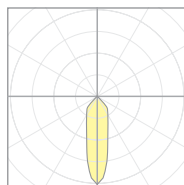


12208
P9348-40HI

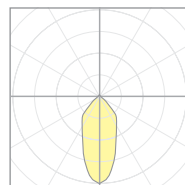
*delivered lumens based on 4000K, 90 cri

Downlight	Delivered* Lumens	Watts 120V / 277V	IES File #	LLF to be applied
	1300	14	20921 spot	.40
			20922 med	.40
			20923 wide	.40
			20924 x-wide	.40

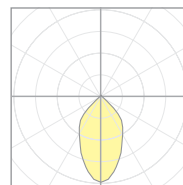
*delivered lumens based on 4000K, 90+ cri



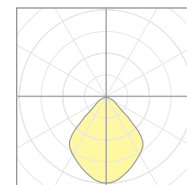
20921
P7506-S-40H3
S 20° spot



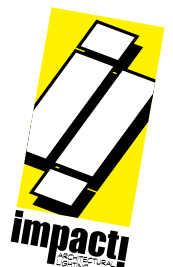
20922
P7506-M-40H3
M 30° med



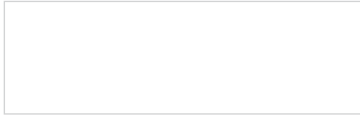
20923
P7506-W-40H3
W 50° wide



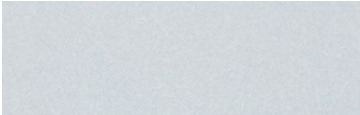
20924
P7506-EW-40H3
XW 90° extra wide



Powder Coat Paint Finishes



MW matte white



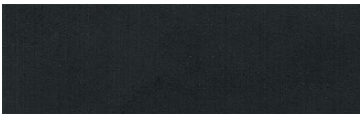
AP anodized paint
AN silver anodized



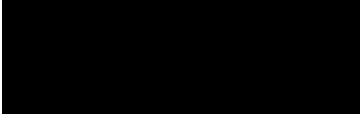
SS satin silver



TG textured gray



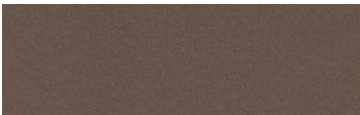
FB flat black



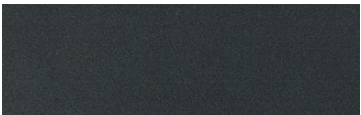
SB satin black
ANB anodized black



CP champagne



BZ bronze



GM gun metal



OR orange 2011



BU blue 5017



BS brass



RD red 3020



YO yellow 1018



MB military blue

For accurate color verification, actual finish samples are available upon request.

Premium Finishes*



RAL#

*Available on select series. Consult product submittal for availability.

